

CUTWATER 32 COUPE



Do it all with this no-compromise cruiser. The new Cutwater 32 Coupe (C-32 C) introduces an entirely new way of thinking about an outboard-powered cruiser. Performance, versatility and comfort are central to the design of the C-32 C. It's advanced double-stepped, deep-V hull design combines speed, efficiency and superior stability for a fun and comfortable ride. Our patented Laminar Flow Interrupters allow for smooth, positive cornering. Roll the throttles forward and you'll feel the powerful twin, counter-rotating 300HP Yamaha outboards, propel the C-32 C to remarkable speeds.

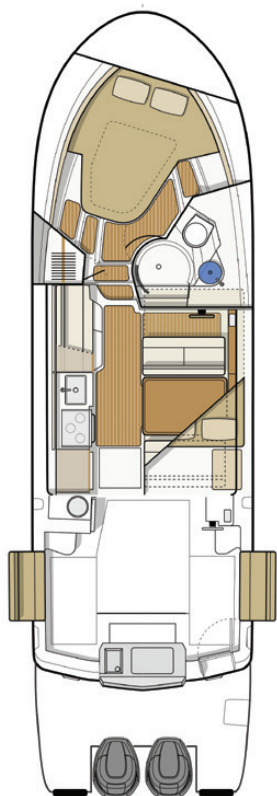
Upon stepping into the comfortable interior, you'll feel fully at home. With wood accents throughout, a fully furnished galley, large dinette, private head and shower, and a luxurious master stateroom featuring an island bed with recessed LED lighting, the C-32 C delivers a resort-like experience. The large midship stateroom and convertible dinette comfortably sleep up to four additional guests.

You'll find extensive entertaining space on deck. The cockpit hosts expanding seating, rear-facing lounge, an electric BBQ grill, sink and an additional refrigerator. Moving to the foredeck you find the hide-away lounge seating to relax and take in the sunset. Equipped with the latest in marine electronics, the helm is where you're fully in control. Dual Garmin 8612xsv chartplotters with sonar, xHD radar, VHF, electronic throttles, and joystick thruster controls, all work in unison to get you where you want to go, quickly and safely.

Perhaps the most exciting new feature of the C-32 C is the first of its kind, Clear-Path swim platform boasting thirty-two square feet of level, unobstructed, nonskid decking without any outboard well, rigging tubes or hoses to trip over. Heavy-duty stainless-steel handrails provide stability for boarding, fishing, watersports, and safe dinghy access. To sum it all up, the C-32 C is a robust, do it all outboard cruiser that gives you the freedom to get out there and cruise, fish, explore and more!

Specifications

Length rigged LOA (motors down)	37' 8"	11.5 m
Length rigged LOA (motors up)	39' 10"	12.1 m
Beam	10'	3.05 m
Draft (motors up)	26"	.66 m
Draft (motors down)	33"	.84 m
Weight (dry)	10,000 lbs	4,536 kg
Height on factory trailer	13' 6"	4.1 m
Fuel capacity	300 U.S. Gal	1,135.6 L
Water capacity	80 U.S. Gal	302.8 L
Holding tank capacity	40 U.S. Gal	151.4 L



Cutwater 32 Coupe

Standard Features

Performance

Twin counter-rotating Yamaha 300 HP outboard engines
Digital Yamaha engine display with fuel flow data
Double-stepped hull for increased efficiency and performance
Laminar Flow Interrupters for smooth, positive cornering (patented)
Thrusters, stern and bow
Trim Tabs

Boater Features

32 sq. ft. *Clear-Path* swim platform w/ handrails and fenders
Anchor locker, S.S. self launching bow roller
Batteries (7) w/charging relay & switch panel
Bow platform w/4 rung S.S. ladder (beach access)
Bow seats/ fender storage
Cockpit refrigerator/freezer, 12V
Cockpit table, Cherry, removable
Convertible cockpit seats, fold out of gunwales
Docking lights, (2) forward hull
Fishbox
Fusion stereo system, AM/FM, Aux, Bluetooth
Hatches (2), forward cabin roof, opening, translucent w/screens
Hatches (4), salon house roof, opening, translucent w/screens
Inverter, 2,000w, pure sine wave
Mast, stainless steel, hinged
Island berth with memory foam, master stateroom
Mid cabin, 6' 8" cushioned, portlights, lamps, gear storage
Portlight, opening, head (1), forward stateroom (5)
Powered main cockpit compartment hatch
Rod holders
Sport racks
S.S. 4 rung ladder on swim platform
Transom door for easy access
Transom livewell
Transom removable electric Kenyon grill
Transom sink w/hot and cold water
TVs (2) w/DVD, salon and master stateroom (12v)
Washdown system, cockpit raw water
Water tank level monitor (fresh)
Windlass 12V, stainless steel with helm and bow controls



Convenience

Dinette, salon, converts to bed, high/low table, sleeps (2)
Covered galley, Maple
Hanging locker
Hot water tank, 11 gallon
Outlets 110V (5)
Power outlets, 12v stbd side, cockpit, mid berth

Private head, shower enclosure, elec. toilet, vanity, portlights
Refrigerator/freezer, 12V
Sinks (3), hot and cold water system w/demand pump
Stove/Oven/Microwave (see value packages)
Wine-water cooler, 12V

Construction

Bonded 12V electrical system
Bronze thru-hulls
Fiberglass cockpit liner, self bailing w/non-skid
Foam-filled fiberglass stringer system
S.S. cleats, rails, ext. hardware
Shorepower 30 amp/115v, w/50' cord
Vinylester barrier coat (hull)

Safety

Bilge pump, (2) 12V auto, high bilge alarm
Carbon monoxide detectors (2), 12V
Courtesy lights, cockpit, transom platform
Horns, electric dual trumpet
Illuminated Compass
Navigation lights, with light boards
VHF radio, Garmin with antenna, DSC capable
Windlass with bow and helm controls
Windshield wipers (2)



Additional Factory Options

Aft cockpit sun and sunset shades	\$1,500
Aft cockpit bimini top with boot	\$3,440
Aft station steering with electronic controls	\$4,970
Aluminum triple axle trailer, electric/hydraulic brakes, spare tire w/bracket	\$14,997
Cockpit ice maker in lieu of standard refrigerator	\$470
Dinghy lift (lift only, no dinghy)	\$5,480
Dinghy lift w/290 RIB inflatable	\$8,440
Factory Delivery Experience	\$2,500
Garmin Weather Antenna	\$1,000
Hull color upgrade	\$7,500

Cutwater 32 C Value Package FACTORY DIRECT PRICING

All Cutwater 32 models are sold **fully-equipped** and **ready to cruise**. There are two packages to choose from, the Luxury Edition with a 5KW generator and air conditioning or the Northwest Edition with a diesel forced air furnace, propane stove and oven, and downrigger plugs and pads.

Northwest Edition Includes:

- Anchor Package 22# anchor, 50' HT chain, 200' line
- Autopilot, Garmin w/remote
- AGM batteries
- **Diesel heater, forced air furnace**
- **Downrigger plugs and pads**
- LED lights
- Macerator discharge
- **Microwave**
- Navigation package, Garmin chartplotters, dual 8612xsv w/ sonar, xHD radar
- Rocket launchers, arch with rod holders
- Safety kit
- Solar panel, w/control panel
- **Propane stove and oven with tanks and locker**
- Swim platform rails
- Thruster wireless remote (bow and stern)
- Underwater lights

FULLY EQUIPPED, READY TO CRUISE FROM:

\$314,937.00*

**Options, freight & taxes extra*

Prices, specifications, equipment and options may change without notice. 0320



MADE IN USA



Luxury Edition Includes:

- **Air conditioning/rev cycle heat**
- Anchor Package 22# anchor, 50' HT chain, 200' line
- Autopilot, Garmin w/remote
- AGM batteries
- **Convection oven/microwave combo**
- **Generator, 5KW gasoline, w/sound shield**
- LED lights
- Macerator discharge
- Navigation package, Garmin chartplotters, dual 8612xsv w/ sonar, xHD radar
- Rocket launchers, arch with rod holders
- Safety kit
- Solar panel, w/control panel
- **Stove top, dual burner electric**
- Swim platform rails
- Thruster wireless remote (bow and stern)
- Underwater lights

FULLY EQUIPPED, READY TO CRUISE FROM:

\$329,937.00*



17341 Tye St. S.E.
Monroe, Washington 98272
Phone 800.349.7198
www.CutwaterBoats.com